

【Important】 For Master's Students and Academic Supervisors

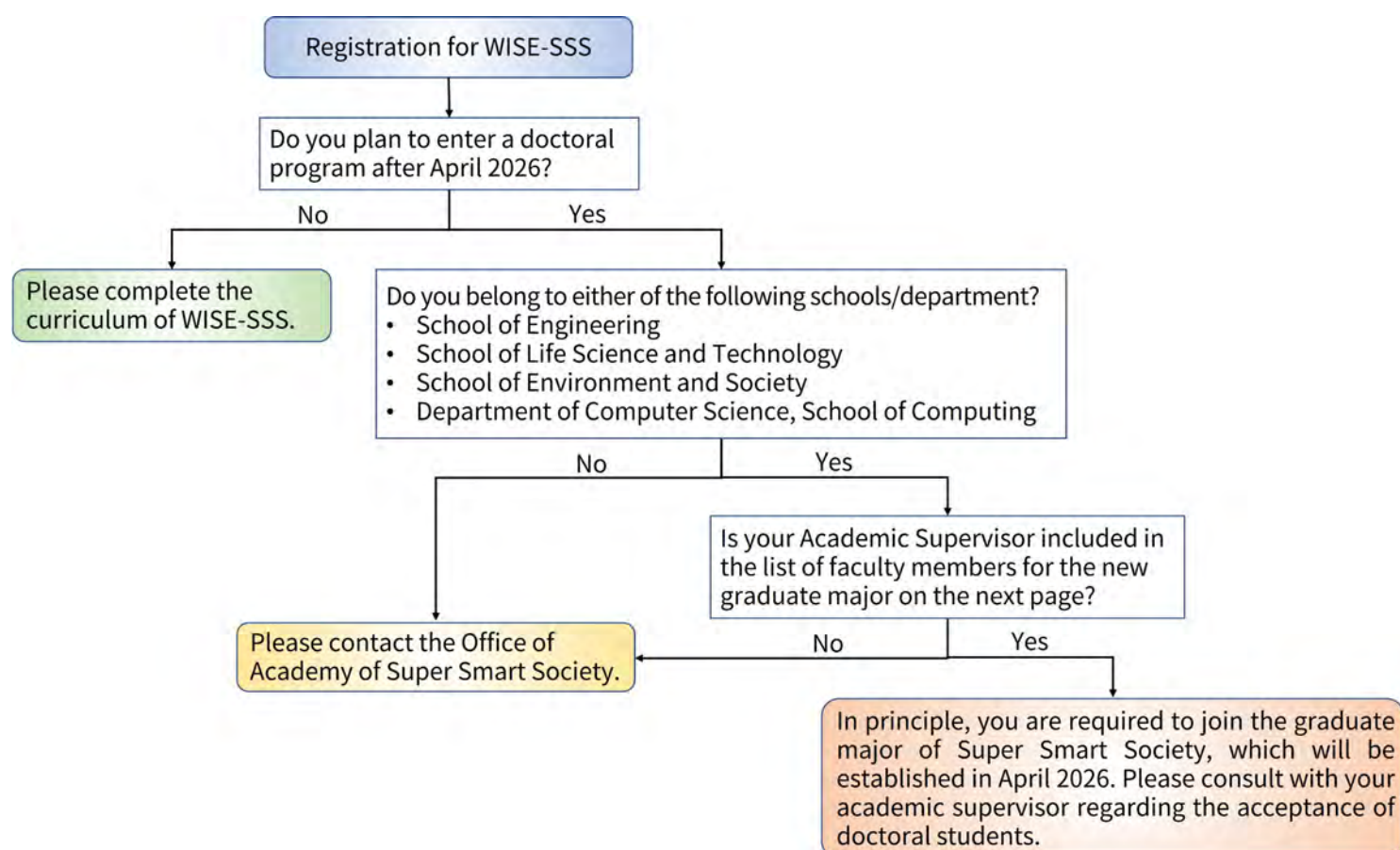
In principle, students entering the doctoral course in April 2026 or later are expected to leave WISE-SSS at the time of entering the doctoral course and belonging to a Graduate Major in Super Smart Society to complete the equivalent curriculum.

Graduate Major in Super Smart Society

This is a new interdisciplinary graduate major to be established in April 2026 as the successor to WISE-SSS.

- Unlike WISE-SSS, Graduate Major in Super Smart Society will formally offer institutional degree accreditation.
- Graduate Major in Super Smart Society is specialized for doctoral students.
- As with WISE-SSS, the new graduate major will deliver research and education in close collaboration with society through the SSS Promotion Consortium.

Students planning to register for WISE-SSS are requested to follow the flow below.



Contact:

Academy of Super Smart Society (WISE-SSS)

S3-71, Room. 213, South Bldg. 3, Ookayama

E-mail: wise-sss@jim.titech.ac.jp

School	Department	Affiliation	Name	Title
School of Engineering	Mechanical Engineering	School of Engineering	Gen Endo	Professor
School of Engineering	Mechanical Engineering	Institute of Innovative Research	Joon-wan Kim	Professor
School of Engineering	Mechanical Engineering	School of Engineering	Hideharu Takahashi	Associate Professor
School of Engineering	Mechanical Engineering	School of Engineering	Tomohisa Tanaka	Associate Professor
School of Engineering	Mechanical Engineering	School of Engineering	Hiroto Tanaka	Associate Professor
School of Engineering	Mechanical Engineering	School of Engineering	Hiroki Nakanishi	Associate Professor
School of Engineering	Mechanical Engineering	School of Engineering	Kazuyoshi Fushinobu	Professor
School of Engineering	Mechanical Engineering	School of Engineering	Touru Yagi	Professor
School of Engineering	Systems and Control Engineering	School of Engineering	Takeshi Hatanaka	Professor
School of Engineering	Systems and Control Engineering	School of Engineering	Mitsuji Sampei	Professor
School of Engineering	Systems and Control Engineering	School of Engineering	Kazuhiro Nakadaï	Professor
School of Engineering	Systems and Control Engineering	School of Engineering	Motomu Nakashima	Professor
School of Engineering	Systems and Control Engineering	School of Engineering	Tomohisa Hayakawa	Associate Professor
School of Engineering	Systems and Control Engineering	School of Engineering	Rei Kawakami	Associate Professor
School of Engineering	Systems and Control Engineering	School of Engineering	Daisuke Kurabayashi	Professor
School of Engineering	Electrical and Electronic Engineering	School of Engineering	Kenichi Okada	Professor
School of Engineering	Electrical and Electronic Engineering	School of Engineering	Kei Sakaguchi	Professor
School of Engineering	Electrical and Electronic Engineering	School of Engineering	Mutsuko Hatano	Professor
School of Engineering	Electrical and Electronic Engineering	School of Engineering	Jiro Hirokawa	Professor
School of Engineering	Electrical and Electronic Engineering	School of Engineering	Keigo Arai	Associate Professor
School of Engineering	Electrical and Electronic Engineering	School of Engineering	Takayuki Iwasaki	Professor
School of Engineering	Electrical and Electronic Engineering	School of Engineering	Kyohei Kiyota	Associate Professor
School of Engineering	Electrical and Electronic Engineering	School of Engineering	Tetsuo Kodera	Associate Professor
School of Engineering	Electrical and Electronic Engineering	School of Engineering	Nozomi Takeuchi	Associate Professor
School of Engineering	Electrical and Electronic Engineering	School of Engineering	Tran Gia Khanh	Associate Professor
School of Engineering	Electrical and Electronic Engineering	School of Engineering	Pham Nam Hai	Professor
School of Engineering	Electrical and Electronic Engineering	Institute of Innovative Research	Atsushi Shirane	Associate Professor
School of Engineering	Electrical and Electronic Engineering	School of Engineering	Tomohiro Amemiya	Associate Professor
School of Engineering	Electrical and Electronic Engineering	School of Engineering	Takashi Tomura	Assistant Professor
School of Engineering	Information and Communications Engineering	School of Engineering	Tomohiko Uematsu	Professor
School of Engineering	Information and Communications Engineering	School of Engineering	Isao Yamada	Professor
School of Engineering	Information and Communications Engineering	School of Engineering	Takahiro Shinozaki	Professor
School of Engineering	Information and Communications Engineering	School of Engineering	Yoshihiro Watanabe	Associate Professor
School of Engineering	Information and Communications Engineering	Institute of Innovative Research	Takamichi Nakamoto	Professor
School of Engineering	Information and Communications Engineering	School of Engineering	Kazuhiko Fukawa	Professor
School of Engineering	Information and Communications Engineering	Institute of Innovative Research	Kenji Suzuki	Professor
School of Engineering	Information and Communications Engineering	Institute of Innovative Research	Yasuharu Koike	Professor
School of Engineering	Information and Communications Engineering	School of Engineering	Ryutaro Matsumoto	Professor
School of Engineering	Information and Communications Engineering	School of Engineering	SLAVAKIS KONSTANTINOS	Professor
School of Engineering	Information and Communications Engineering	Institute of Innovative Research	Takashi Obi	Associate Professor
School of Engineering	Information and Communications Engineering	Institute of Innovative Research	Marie Tabaru	Associate Professor
School of Engineering	Industrial Engineering and Economics	School of Engineering	Kotaro Inoue	Professor
School of Engineering	Industrial Engineering and Economics	School of Engineering	Dai Senoo	Professor
School of Engineering	Industrial Engineering and Economics	School of Engineering	Xiuzhu Gu	Associate Professor
School of Computing	Computer Science	School of Computing	Koichi Shinoda	Professor
School of Computing	Computer Science	School of Computing	Masayuki Yamamura	Professor
School of Computing	Computer Science	School of Computing	Jun Sakuma	Professor
School of Computing	Computer Science	School of Computing	Suguru Saito	Associate Professor
School of Computing	Computer Science	School of Computing	Asako Kanezaki	Associate Professor
School of Life Science and Technology	Life Science and Technology	School of Life Science and Technology	Nobuhiro Hayashi	Professor
School of Life Science and Technology	Life Science and Technology	School of Life Science and Technology	Kumi Kuroda	Professor
School of Environment and Society	Architecture and Building Engineering	School of Environment and Society	Takashi Asawa	Associate Professor
School of Environment and Society	Architecture and Building Engineering	School of Environment and Society	Takuya Oki	Associate Professor
School of Environment and Society	Civil and Environmental Engineering	School of Environment and Society	Mitsuyasu Iwanami	Professor
School of Environment and Society	Civil and Environmental Engineering	School of Environment and Society	Eiichi Sasaki	Professor
School of Environment and Society	Transdisciplinary Science and Engineering	School of Environment and Society	Jun-ichi Takada	Professor
School of Environment and Society	Transdisciplinary Science and Engineering	School of Environment and Society	Yasuko Kasai	Professor
School of Environment and Society	Transdisciplinary Science and Engineering	School of Environment and Society	Alvin C.G. Varquez	Associate Professor
School of Environment and Society	Social and Human Sciences	Institute for Liberal Arts	Takehiro Inohara	Professor
School of Environment and Society	Social and Human Sciences	Institute for Liberal Arts	Sanae Akaba	Associate Professor